

RESOURCE PLANNING AND PROFESSIONAL SERVICES DIVISION
POSSIBLE INTERDISCIPLINARY PROJECTS
WITH APPALACHIAN STATE UNIVERSITY

Cultural Resource Focus

- Historic Resource Study: Camp Catawba
- Cultural Landscape Report: Julian Price Park
- Mapping of Archeology Potential (*using GIS predict where high, low, medium potential for archeology exists based on slope, distance from water, rock outcrops, etc.*)
- Oral histories
- Catalogue Parkway plants at ASU herbarium (*1500-2000 specimen*)
- Inventory Parkway collection at Moses Cone Estate/Apple Barn, Brinegar Cabin and Minerals Museum
- Research: Carriages
- Assess cultural resource values on lands adjacent to the Parkway to guide land protection priorities

Recreational Focus

- Rock Climbing Management Plan
- Recreational Plan for Julian Price Park
- Recreational Plan for Doughton Park Backcountry
- Trail Condition: Doughton Park to Linville Falls (*including, mapping of unauthorized trails*)
- Find/Establish a destination point on Tanawha Trail that would reduce use to Rough Ridge

Natural Resource Focus

- Visitor Use: Grandfather Mountain Corridor (*Carrying capacity, local vs. visitor use*)
Rough Ridge, Grandmother Mountain, Tanawha Trail)
- Plant Inventories Along Trails (*including identification of galax plots that are potential sites to be poached*)
- Research Question: How to keep visitors on trails
- Long-term monitoring of galax
- Identification and mapping of old apple orchards in the park

Visual/Aesthetics Focus

- Continuation of vista management studies (*cutting rotation, herbicide use, rhododendron planting*)
- Establishing photo-points to monitor change in landscape character
- Develop GIS map layer of Parkway view areas along the 469 mile corridor
- Conduct photo documentation and develop a baseline report on landscape character and scenic quality for each Parkway view area.
- Synthesize scenic quality assessments completed for sixteen counties to determine individual county and regional similarities and differences, trends and projected scenic conservation needs

Travel and Tourism

- Conduct visitor use study to establish travel patterns on Parkway and to and from the Parkway and adjacent communities and attractions
- Conduct an economic impact study to determine the visitor expenditures made in counties traversed by the Parkway
- Assist in developing a gap analysis scope of work for a three county region in SWVA.

Outreach Focus

- Brochure: How to be a good Parkway neighbor (recreational issues, building aesthetics, boundary issues)
- Work with local television station to reduce/eliminate advertising Rough Ridge as primary point of interest



IN REPLY REFER TO

United States Department of the Interior

NATIONAL PARK SERVICE

Blue Ridge Parkway
199 Hemphill Knob Road
Asheville, North Carolina 28803

January 23, 2007

To Whom It May Concern:

The Blue Ridge Parkway is excited about this opportunity to engage in community-based research with students from Appalachian State University. The Parkway and ASU have a history of collaborative projects at the faculty level, and hope to extend these efforts to include students.

Our primary role in this project is to collaborate on research with students in the Public Service Research Program. Our commitment is as follows:

- We will assist in the planning of the overall project, attending meetings with Dr. Clark when scheduled.
- We will identify questions for student research.
- We will collaborate with students in the research process.
- We will meet with students at the beginning of the academic year to launch the projects, and at the end of the academic year to hear the results of their research.
- We will provide Dr. Clark with summary statements of the impact of the students' research.
- We understand that the grant-funded portion of this project will run from September, 2007 until August, 2009. We hope to continue the project after this point, collaborating with students from Appalachian State University on further research projects.

Sincerely,

Bambi Teague
Chief, Resource Management and Science

Parkway Trail Usage Study Proposal
Dr. Norman Clark
Public Service Research Program Coordinator
Appalachian State University
Boone, NC 28608

In collaboration with Bambi Teague and others at the Blue Ridge Parkway office, I am proposing to have students at Appalachian State University gather data about trail usage issues at Moses Cone Manor and Rough Ridge. This research will consist at present of:

- Students reviewing pertinent literature
- Students gathering “best practices” of trail usage from other parks
- Students observing trail behaviors of humans and pets (dogs, horses) at Moses Cone Manor and Rough Ridge

The students will only be engaged in observing people at this point, and will not be asking them questions. In the future, depending on the needs of the Parkway, we may expand this study to include:

- Surveys of residents near the trails
- Surveys of trail users (if permitted)
- Observations of vehicular traffic near Moses Cone Manor

We will prepare a report detailing our observations of trail conflicts, and listing possible mitigation solutions, which will be submitted at a formal presentation in late April at the Parkway office in Asheville.

I have secured a grant from the Learn & Serve America program to pay for student travel to the Parkway, and other research expenses. If you have any further questions about this, please do not hesitate to call me or to ask Bambi Teague, with whom I have worked extensively on this planned project.

Sincerely,
Dr. Norman Clark

IRB Proposal Review #: _____

Request for Exemption of Research Involving Human Subjects

(Please type and submit 1 copy to irb@appstate.edu or mail to Research & Graduate Studies JET Bldg)

Investigator(s): _____ Faculty Advisor _____

Department(s): _____ E-mail: _____ Phone _____

Project Title: _____

- All investigators of this project are qualified through completion of the formal training program or web-based training programs provided by the Appalachian State University Office of Research and Sponsored Programs.

Note: To qualify for Exemption, the research must be (a) of minimal risk to the subjects, (b) must not involve any of the special classes of subjects, and (c) must be in one or more of the following categories. A description of these categories may be found in the federal regulations [45 CFR 46.101(b)(1-6)]. (<http://ohrp.osophs.dhhs.gov/humansubjects/guidance/45cfr46.htm#46.101>)

Please mark/check the appropriate category or categories below which qualify the proposed project for exemption:

1. Research will be conducted in established or commonly accepted educational settings, involving normal educational practices.
2. Research will involve the use of educational tests (cognitive, diagnostic, aptitude, achievement), survey procedures, interview procedures or observation of public behavior, **unless** the subjects can be identified directly or through identifiers linked to the subjects **and** disclosure of responses could reasonably place the subjects at risk of criminal or civil liability or be damaging to the subjects' financial standing, employability or reputation.
3. Research will involve the use of educational tests (cognitive, diagnostic, aptitude, achievement), survey procedures, interview procedures, or observation of public behavior that is not exempt under item 2) above **if** the subjects are elected or appointed public officials or candidates for public office; **or** Federal statute(s) require(s) that the confidentiality or other personally identifiable information will be maintained.
4. Research will involve the collection or study of existing data, documents, records, pathological specimens, or diagnostic specimens if these sources are publicly available or if the information is recorded by the investigator in such a manner that subjects cannot be identified directly or through identifiers linked to the subjects.
5. Research and demonstration projects designed to study, evaluate, or otherwise examine public benefit or service programs, procedures for obtaining benefits or proposed changes in such programs.
6. Taste and food quality evaluation and consumer acceptance studies.
-

Investigator(s)

Print name

Date

Please attach an outline of the protocol (see next page).

Request for Exemption

TITLE OF STUDY: _____

PROCEDURES

Please explain the research procedures involving human subjects. This should include the functions they are expected to perform, for how long, the number of times they are expected to appear, over what period of time, where the research will take place, the instrumentation to be used (attach, if necessary), and the conditions involved..

RISKS AND BENEFITS

Please explain any risks or discomforts the subjects may experience. Include the safeguards that will be employed to minimize or reduce the risks. Also, please explain any tangible or intangible benefits to the subjects. If no benefits accrue to the subjects, what are the larger societal benefits that may result from this research?

CONFIDENTIALITY/ANONYMITY

The extent to which subjects will be identifiable must be explained. If anonymity is promised (individuals cannot be identified), you need to explain how that will be accomplished. If confidentiality is promised (individuals can be identified, but the researchers promise not to divulge that information), you must explain how that will be accomplished.

INFORMED CONSENT

Please attach a copy of the Informed Consent.

SUPPLEMENTAL MATERIALS

Please attach copies of recruiting materials, survey instruments, etc...



Calendar

◀ October 2007 ▶

Sun	Mon	Tue	Wed	Thu	Fri	Sat
	1	2	3	4	5	6
7	8	9	10	11	12	13
14	15	16	17	18	19	20
21	22	23	24	25	26	27
28	29	30	31			

- [Global events](#) [Course events](#)
- [Group events](#) [User events](#)

Search Forums

Go

[Advanced search](#)

Activities

- [Forums](#)
- [Resources](#)
- [Wikis](#)

Topic outline



- Post to the [Observation Times](#) forum (in the block with the Observation Sheets)--or just email it to me directly--the following info: who is going, where, when, and for how long. I'll add it to the calendar.

- [Syllabus](#)
- [Course Schedule](#)
- [News forum](#)
- [Questions for Parkway](#)
- [Observation Protocols](#)
- [Trail Use Wiki](#)

- 1 [Observation Stuff](#)
 - [Observation Times](#)
 - [Observation Sheet for Bass Lake](#)
 - [Observation Sheet for Rough Ridge](#)

Current Time

Latest news

[Add a new topic...](#)

04:21 PM, Oct 15

Todd Mortensen

Friends of The Parkway "ASU Chapter Meeting" [more...](#)

03:39 PM, Oct 15

Norman Clark

Public Lecture on BRP [more...](#)

04:45 PM, Oct 13

Norman Clark

Doing Observations ****Important!!**** [more...](#)

[Older topics ...](#)

People

Participants

Administration

Turn editing on

Settings

Assign roles

Groups

Backup

Restore

Import

Reports

Questions

Scales

Files

2

Official Documents/Links

- Title 36, Code of Federal Regulations
- NPS Management Policies (PDF)
- BR Economic Impact Study
- BR Visitors Survey

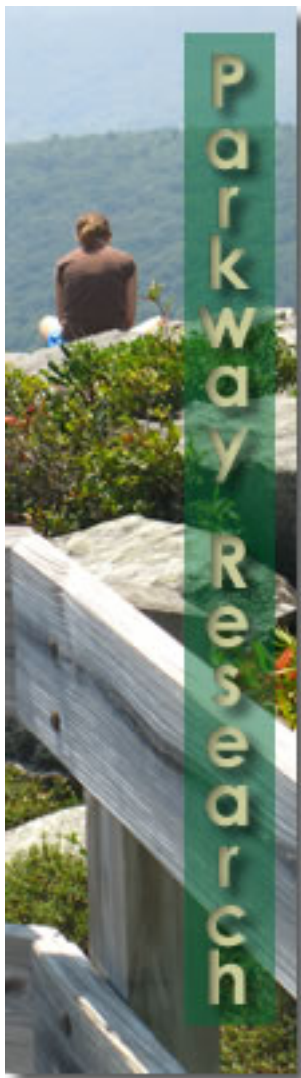
3

Causal Models

- Rough Ridge Causal Model
 - Rough Ridge Causal Model Suggestions
 - Bass Lake Causal Model Suggestions

Upcoming Events

- Trail Observe
 - Tomorrow (09:30 AM)
 - » 10:30 AM)
- Trail Observe
 - Tomorrow (01:00 PM)
 - » 02:00 PM)
- Trail Observe
 - Tomorrow (02:00 PM)
 - » 03:00 PM)
- Trail Observe
 - Tomorrow (05:30 PM)
 - » 06:30 PM)
- Trail Observe
 - Tomorrow (06:30 PM)
 - » 07:30 PM)
- Trail Observe
 - Saturday, October 20 (12:00 PM)
 - » 01:00 PM)
- Trail Observe
 - Saturday, October 20 (01:30 PM)
 - » 02:30 PM)
- Trail Observe
 - Sunday, October 21 (03:00 PM)
 - » 05:00 PM)



Syllabus

Honors 3530 Parkway Research

Instructors

[Dr. Norman Clark](#)

clarkne@appstate.edu

134 Walker Hall

Office: 262-6531

Home: 963-8130

Office Hours: M/W 10-12, T/Th 9:30-11

Todd Mortensen

mortensenta@appstate.edu

Student Programs, Student Union

Office: 262-6566

Cell: 964-5404

Office Hours: By Appointment

Course Objectives

This course is part of a three-year long, grant-supported community-based research (CBR) project, in collaboration with the Blue Ridge Parkway. The overall research question we are facing is a broad one: **what are the trail use conflicts on Parkway trails near ASU?** Over the next three years, we will explore various aspects of this question. Students in this course will learn about:

- CBR, including its differences from traditional academic research and best practices,
- Parkway policies and regulations,
- working together as part of a collaborative, multi-disciplinary research team,
- the process of research planning, data collection, and evaluation,
- and the relationship between tourism, the environment, and contemporary society.

Since this course is new and evolving, other objectives will no doubt be achieved as we work together to create this project.

Assignments

As just stated, this course is evolving. Thus it is difficult at this point to pin down exactly what the assignments will be. I can safely say at this point that you will be doing the following:

- Reading materials linked up on the [course schedule](#), and discussing how they apply to our research project in class,
- Contributing articles to the course Wiki,
- Defining the research question and coming up with data collection

- categories,
- Collecting a wide variety of data (trail observations, phone interviews with Parkway staff, literature reviews, etc.),
 - Attending some Parkway-related events,
 - Collaborating on a report to be submitted to the Parkway staff at the end of the academic year,
 - Presenting the results of the research in the spring, both at ASU and at the Parkway office in Asheville,
 - and Doing other things as yet undetermined, that we as a class decide are necessary for our research.

The primary expectation for this course is that you will be a fully-engaged member of a research team. This means coming to class prepared, fulfilling tasks that the group assigns, and in general being a professional about this. Meet those expectations, and we'll all be happy.

Reimbursement

Students will need to keep track of research expenses and mileage. Check with Dr. Clark before incurring any research-related expense, to make sure that they will be covered by the grant. Turn in any receipts to Dr. Clark as soon as possible. Mileage to observation sites on the Parkway will be reimbursed at \$.25/mile. Students will need to email to Dr. Clark, as soon as possible after a site visit, the date/time they traveled, and how many miles round-trip they drove. This mileage should be from your residence to the site (after you make the first trip, the mileage should be the same unless you change residences, or go to a different site, or there's a really big earthquake...). Grant expenses get turned in to the granting agency monthly, so you won't get reimbursed right away.

Weekly Schedule

This schedule is subject to change as circumstances and wild ideas dictate. It's likely to change a lot as we go through this inaugural year.

Last updated: October 17, 2007

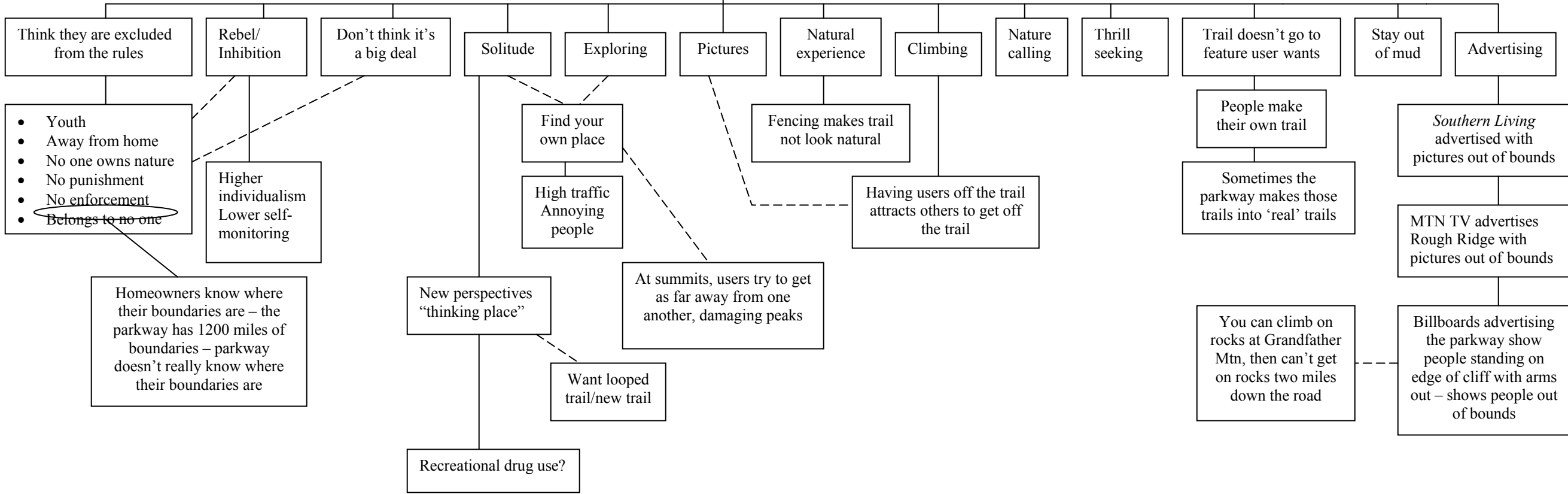
Date	Topic	Out of Class	In Class
Aug 23	Introductions	Read Tourism in Parks Prep for retreat	Get to know Discuss Research Agenda Plan for retreat
Aug 30	CBR	Show Read Stoecker Chpt 2 Look over BRP web site	Discuss what CBR is Divvy up <i>Title 36</i>
Sept 6	Convocation	Master your section of Title 36 Trail Observations	No Class
Sept 13	CPPE, Part I	Read CPPE (focus on Chpt 2) Read GMP Newsletter	Discuss <i>Title 36</i> issues Construct Causal Model
Sept 20	Meet the Rangers	Come up with questions for Park Service	Q&A with Park Service
Sept 27	CPPE, Part II	Review Management Policies table of contents, decide which areas need study Think about what problems occur around Bass Lake, based on our observations/discussions, and	Reassess causal model Divvy up <i>Management Policies</i> Demo adding content to Wiki



		about root causes for those problems, post to Bass Lake Causal Model forum	
Oct 4	Asking Good Research Questions	Read Stringer Chpt 4 Contribute to <i>Title 36</i> article in Wiki Start mastering your section of <i>Management Policies</i> Think about what categories we need to create for observations at Rough Ridge, Bass Lake, post to Observation Protocol forum	Figure out what we need to know, how we can learn it Divvy up tasks Create Observation sheets
Oct 11	Fall Break	Contribute to <i>Management Policies</i> article in Wiki Trail Observations	No Class
Oct 18	Ranger Visit	Post questions for ranger to forum Trail Observations	Q&A with David Bauer, Supervisory Ranger
Oct 25	Diving into the Lit	Find at least 3 articles (post bib info to forum so we don't duplicate) closely related to study/problems, identify key terms/themes, post to forum Trail Observations	No Class (Norm & Todd at Grant Meeting)

Nov 1	Sharing Literature	Continue literature collection, reading	Discuss literature found so far, plan ahead for what other lit/data needed
Nov 8	Tourism & Postmodernism	Read Urry 8 & 14 Data Collection	Discuss Reading Data Reports
Nov 15	Giving Thanks		Dinner at Dr. Clark's house; discuss project so far
Nov 29	Tourism & the Environment	Read Urry 12 Data Collection	Discuss Reading Data Reports
Dec 6	Looking ahead		Plan for spring semester

Reasons for leaving the trail



Think they are excluded from the rules

- Youth
- Away from home
- No one owns nature
- No punishment
- No enforcement
- Belongs to no one

Homeowners know where their boundaries are – the parkway has 1200 miles of boundaries – parkway doesn't really know where their boundaries are

Rebel/Inhibition

Higher individualism
Lower self-monitoring

Don't think it's a big deal

New perspectives "thinking place"

Recreational drug use?

Solitude

Find your own place

High traffic
Annoying people

Want looped trail/new trail

Exploring

At summits, users try to get as far away from one another, damaging peaks

Pictures

Fencing makes trail not look natural

Having users off the trail attracts others to get off the trail

Natural experience

Climbing

Nature calling

Thrill seeking

Trail doesn't go to feature user wants

People make their own trail

Sometimes the parkway makes those trails into 'real' trails

You can climb on rocks at Grandfather Mtn, then can't get on rocks two miles down the road

Stay out of mud

Advertising

Southern Living advertised with pictures out of bounds

MTN TV advertises Rough Ridge with pictures out of bounds

Billboards advertising the parkway show people standing on edge of cliff with arms out – shows people out of bounds

